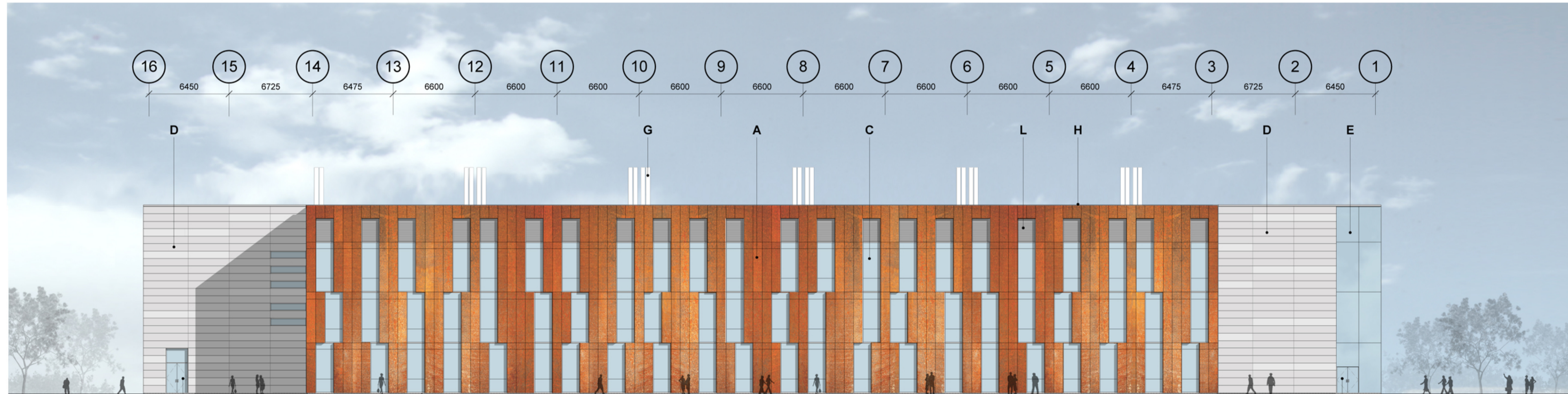
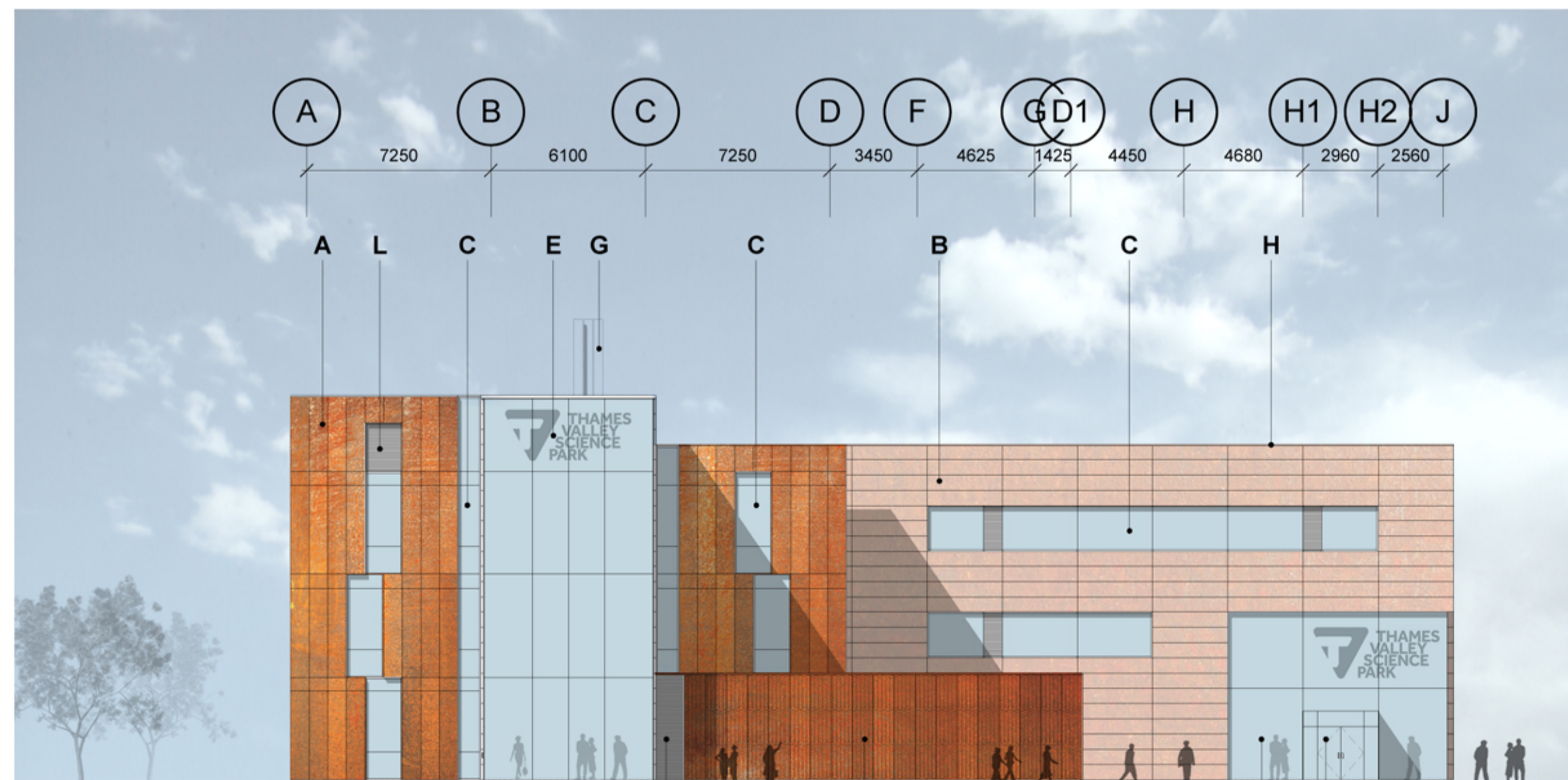


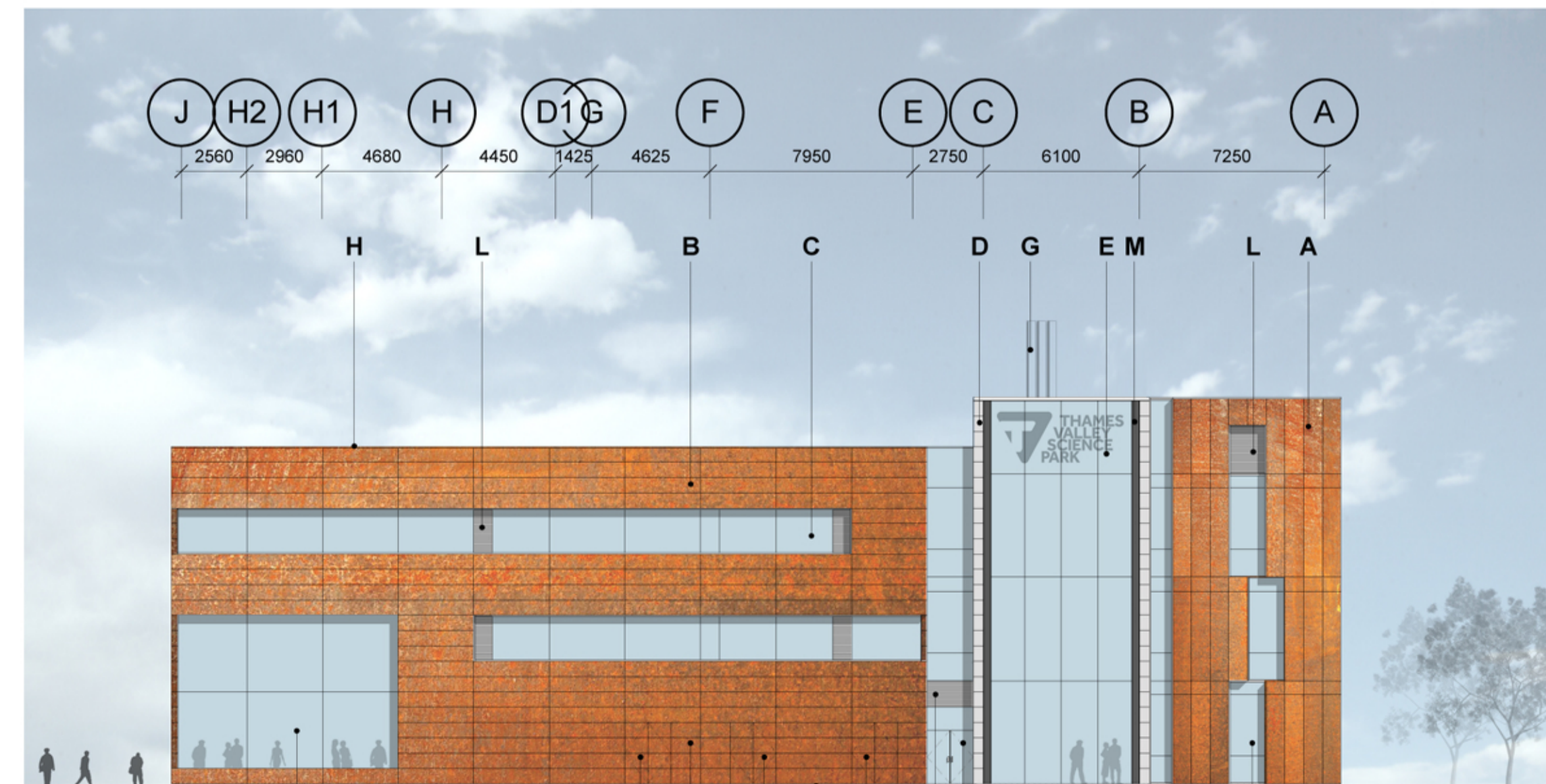
Elevation A - North west
1 : 200



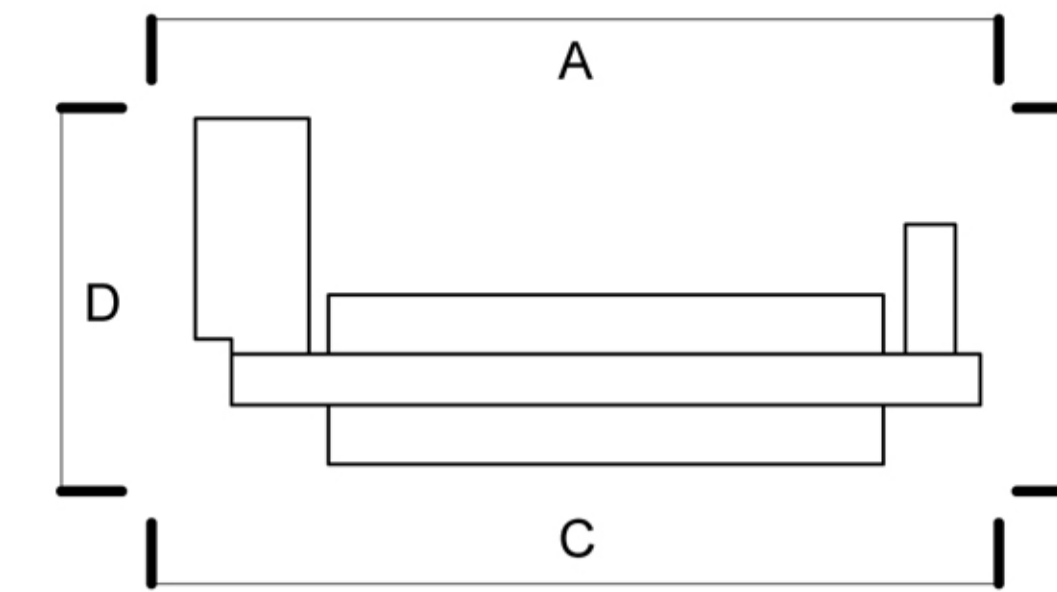
Elevation C - South east
1 : 200



Elevation B - North east
1 : 200



Elevation D - South west
1 : 200



Material Notes

- A Kingspan Benchmark 'hook-on cassette' system COR-TEN WEATHERING STEEL vertical rainscreen panels secret fixed on carrier system and Karrier panel on SFS. Cor-ten steel to window reveals, soffits and cills.
- B Kingspan Benchmark 'hook-on cassette' system COR-TEN WEATHERING STEEL horizontal rainscreen panels secret fixed on carrier system and Karrier panel on SFS. Cor-ten steel to window reveals, soffits and cills.
- C Double glazed aluminium curtain walling system with capped perimeters and silicone joint intermediate transoms/ mullions. GL indicates glazed lookalike ceramic panel to inner pane
- D Kingspan Benchmark 'hook-on cassette' system ANODIZED ALUMINIUM rainscreen panels secret fixed on carrier system and Karrier panel on SFS. Panels to be a mixture of matt or gloss finish. Anodized aluminium to window reveals, soffits and cills.
- E Schuco aluminium structural glazing system (FW50+ SG or similar)
- F Engineering facing brickwork with dark grey mortar to plinth
- G Stainless steel flues on CHS structural support
- H Corten steel parapet capping
- J Corten Eyetech mesh on carrier system
- K Corten Eyetech mesh over panel to proprietary louvred steel door
- L Aluminium louvre panels integrated into curtain walling system
- M PFC vertical steel channel
- N Glazed door integrated into curtain walling system
- O Anodized aluminium parapet capping
- P MF plasterboard bulkhead
- Q Acid etched glass manifestation graphic (indicative pattern) graphic
- R Metal composite panel
- S Proprietary steel door

Revision	Date	Drawn By
07	07/05/05	PSW
Door to Stair B relocated on Elevation C. Panel setting out updated.		
Revision	Date	Drawn By
06	18/02/15	PSW
Hub elevations revised. Notes revised. Issued for planning.		
Revision	Date	Drawn By
05	22/01/15	PSW
Notes revised.		
Revision	Date	Drawn By
04	14/01/15	PSW
Elevation heights reduced. Window height and width reduced. Single storey pod omitted. Material notes updated. Hub elevations revised.		
Revision	Date	Drawn By
03	18/12/14	PSW
Height of central spine and flues reduced. Windows and doors added to spine. Amenity hub elevation revised.		
Revision	Date	Drawn By
02	16/12/14	PSW
Elevations and materials notes updated.		
Revision	Date	Drawn By
01	06/11/14	PSW
First Issue		

Amendment
Status
Preliminary
Project
University of Reading
Thames Valley Science Park
Reading
Drawing
Proposed GA Elevations

Project No. 2814
Scale at A1 As indicated
Drawing No. 360-001-Rev07
Drawn By PSW

The use of this data by the recipient acts as an agreement of the following statements -
All drawings are based upon site information supplied by third parties and as such their accuracy cannot be guaranteed. All features are approximate and subject to clarification by a detailed topographical survey, statutory service enquiries and confirmation of the legal boundaries.
The controlled version of this drawing should be viewed in DWF or PDF format not DWG or other formats.
Where this drawing has been based upon Ordnance Survey data, it has been reproduced under the terms of Ryder Licence No. 100000144. Reproduction of this drawing in whole or in part is prohibited without the prior permission of Ordnance Survey.
Do not scale the drawing. Use figured dimensions in all cases. Check all dimensions on site. Report any discrepancies in writing to Ryder before proceeding.

This page is intentionally left blank